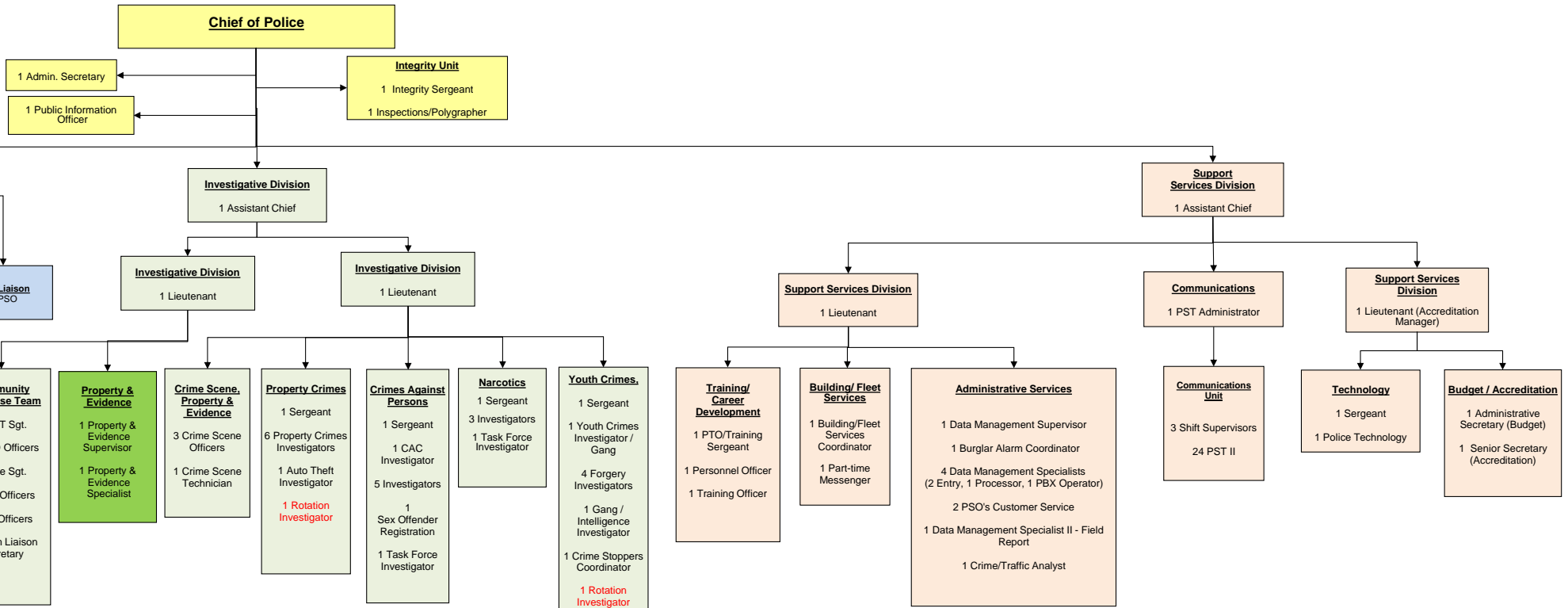


**ORGANIZATIONAL CHART
FY 2017-18**



CHIEF
4 Sworn
1 non-Sworn
5 Total

PATROL
128 Sworn
6 non-Sworn
134 Total

INVESTIGATIVE SERVICES
55 Sworn
4 non-Sworn
59 Total

SUPPORT SERVICES
7 Sworn
41 non-Sworn
1 Part-Time
49 Total

AUTHORIZED DEPARTMENT POSITIONS
194 SWORN
54 NON-SWORN
1 PART-TIME NON-SWORN